

## SS2000 - Occupancy Sensor for Automated Controls

### Overview

The SS2000 motion/infrared occupancy sensor is designed with advanced engineering and sophisticated people-sensing technology. The SS2000 features a hidden internal prism that allows overlapping coverage. The sensor communicates via a wireless radio link to all Telkonet SmartEnergy HVAC controls and accessories and is powered with four AA batteries (hard-wired interface is optionally available). The SS2000 looks similar to a smoke detector.

Since the SS2000 sensor has its own power supply and a wireless radio link, the sensor can be placed in the optimum room viewing position, which is usually on the ceiling. Up to 8 SS200's can be wirelessly linked to each HVAC control.

The SS2000 can be used with the SS1000 plug-and-play energy controller and the SS5000 digital computerized thermostat. Additionally, the SS2000 can be used to automate lighting, dampers, and many other functions that can benefit from occupancy-based energy controls.

### Features

- Wireless people sensor
- Portable power, no wiring needed
- Resistant to sun, TV, moving curtains
- Uses digital signal processing to recognize people,



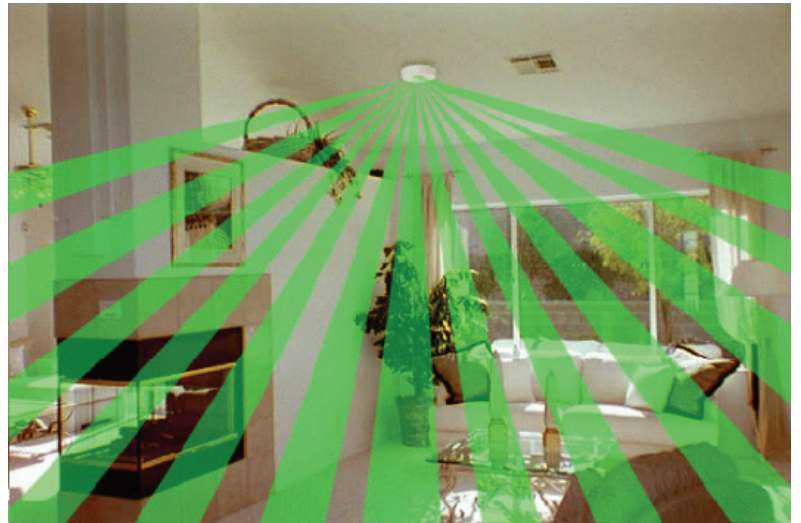
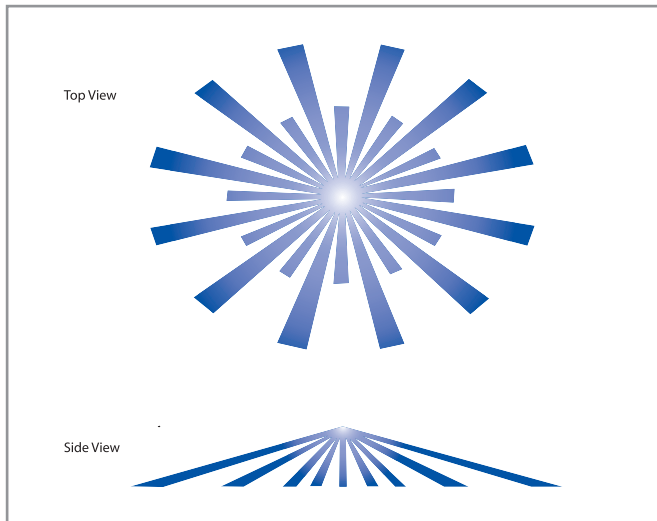
- even when sleeping
- Unique dual element pyro-electric infrared sensor. Continuously monitors for heat and motion.
- Superior RFI and EMI immunity
- FCC approved
- SSDN radio network, 49.85 MHz., 1200 baud, AM, CDMA encoded
- Wireless door sensors to turn off HVAC when a patio door is left open
- Hard-wired interface optionally available via 4 pin Molex
- Wireless / wired door-switch monitoring available
- Low power mode allows for extended battery life
- Selectable RF transmit rates for reliable communication in varying construction

### Technical Specifications

Parameter	Limits	Units	Comments
Operational Voltages	4 - 6.5	VDC	5.0 VDC nom.
Input Current	100/62,000	uAmp	View/Transmit mode
Output Power	1	mW ERP	FCC part 15
Frequency	49.85	MHz	AM modulation
Baud Rate	1,200	BPS	—
Detection Range	30	Feet	Sensing area's diameter
Radio Range	100 - 300	Feet	Varies with construction
Batteries	4	AA	Alkaline AA
Dimensions	4.6 X 1.5	Inches	Diameter x profile
Certifications	FCC, RSSI	—	US, Canada, Mexico

\*Technical specifications are subject to change at any time.

## Typical Coverage Patterns



These diagrams illustrate the coverage pattern of the SS2000 Occupancy Sensor, showing how an entire room is scanned for motion.

Related Products: SS1000 Non-Display Controller, SS5000 Digital Thermostat

[www.ivacommunications.net](http://www.ivacommunications.net)

### IVA Communications, LLC

911 Silver Spring Avenue, Ste., 202  
Silver Spring, Maryland 20910  
[management@ivacommunications.net](mailto:management@ivacommunications.net)

Phone: 301.585.0746  
Toll-Free in the US: 800.326.9936  
Fax: 301.585.0747

