

SS2000 - Occupancy Sensor for Automated Controls

Overview

The SS2000 motion/infrared occupancy sensor is designed with advanced engineering and sophisticated people-sensing technology. The SS2000 features a hidden internal prism that allows overlapping coverage. The sensor communicates via a wireless radio link to all Telkonet SmartEnergy HVAC controls and accessories and is powered with four AA batteries (hard-wired interface is optionally available). The SS2000 looks similar to a smoke detector.

Since the SS2000 sensor has its own power supply and a wireless radio link, the sensor can be placed in the optimum room viewing position, which is usually on the ceiling. Up to 8 SS200's can be wirelessly linked to each HVAC control.

The SS2000 can be used with the SS1000 plug-and-play energy controller and the SS5000 digital computerized thermostat. Additionally, the SS2000 can be used to automate lighting, dampers, and many other functions that can benefit from occupancy-based energy controls.

Features

- Wireless people sensor
- Portable power, no wiring needed
- Resistant to sun, TV, moving curtains
- Uses digital signal processing to recognize people,



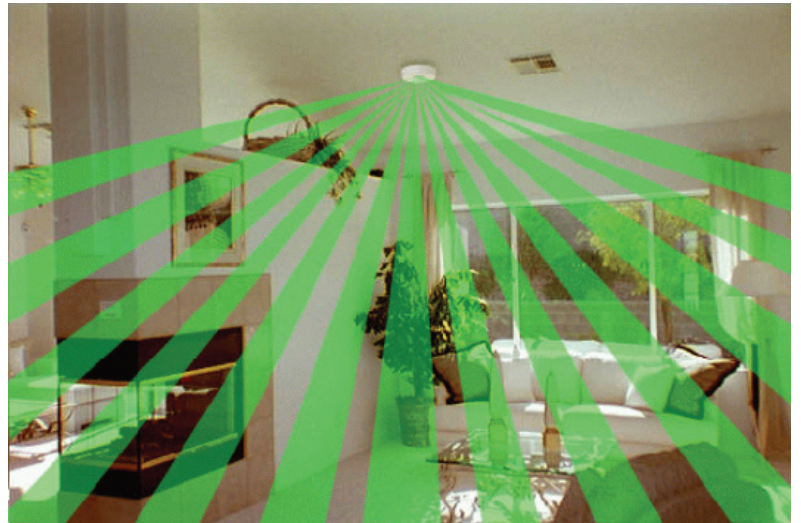
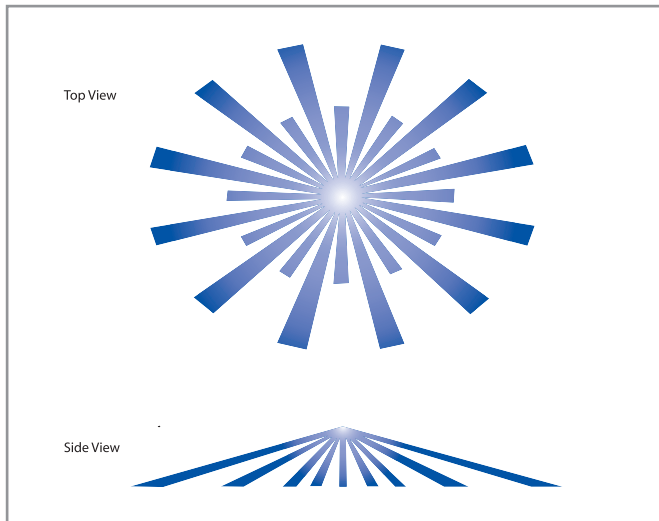
- even when sleeping
- Unique dual element pyro-electric infrared sensor. Continuously monitors for heat and motion.
- Superior RFI and EMI immunity
- FCC approved
- SSDN radio network, 49.85 MHz., 1200 baud, AM, CDMA encoded
- Wireless door sensors to turn off HVAC when a patio door is left open
- Hard-wired interface optionally available via 4 pin Molex
- Wireless / wired door-switch monitoring available
- Low power mode allows for extended battery life
- Selectable RF transmit rates for reliable communication in varying construction

Technical Specifications

Parameter	Limits	Units	Comments
Operational Voltages	4 - 6.5	VDC	5.0 VDC nom.
Input Current	100/62,000	uAmp	View/Transmit mode
Output Power	1	mW ERP	FCC part 15
Frequency	49.85	MHz	AM modulation
Baud Rate	1,200	BPS	—
Detection Range	30	Feet	Sensing area's diameter
Radio Range	100 - 300	Feet	Varies with construction
Batteries	4	AA	Alkaline AA
Dimensions	4.6 X 1.5	Inches	Diameter x profile
Certifications	FCC, RSSI	—	US, Canada, Mexico

*Technical specifications are subject to change at any time.

Typical Coverage Patterns



These diagrams illustrate the coverage pattern of the SS2000 Occupancy Sensor, showing how an entire room is scanned for motion.

Related Products: SS1000 Non-Display Controller, SS5000 Digital Thermostat

www.ivacommunications.net

IVA Communications, LLC

911 Silver Spring Avenue, Ste., 202
Silver Spring, Maryland 20910
management@ivacommunications.net

Phone: 301.585.0746
Toll-Free in the US: 800.326.9936
Fax: 301.585.0747

